



VILLA PROJECT



AREA 120m²

COMPOSITION FOUR 40 FEET HC

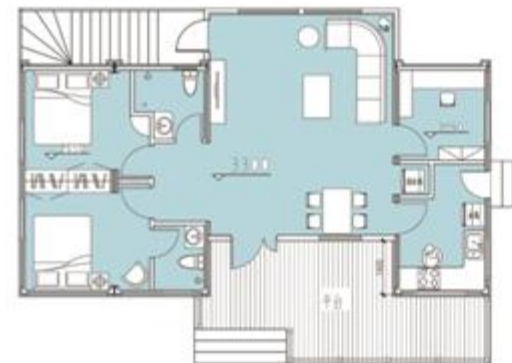


VILLA PROJECT

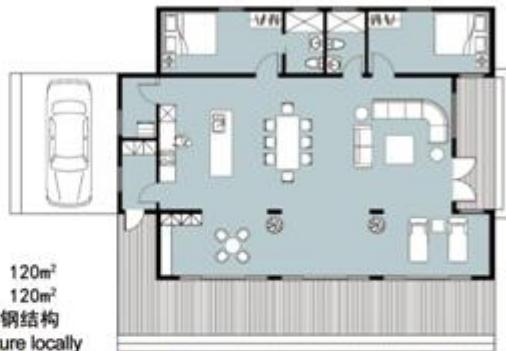


AREA : 75m²

COMPOSITION : Three 20 HC, steel structure locally



VILLA PROJECT



面积：120m²
 AREA：120m²
 组成：2个40尺高柜，局部钢结构
 COMPOSITION：Two 40 HC, steel structure locally



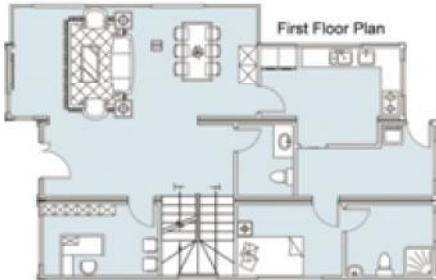
VILLA PROJECT



AREA 120m²
 COMPOSITION FOUR 40 HC



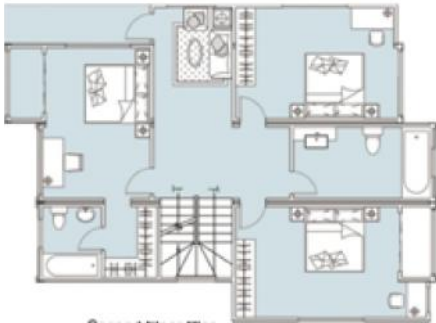
ILLA PROJECT



First Floor Plan

AREA 200m²

COMPOSITION SIX 40 HC



Second Floor Plan



VILLA PROJECT



AREA 400m²

COMPOSITION FOURTEEN 40 HC



First Floor Plan



Second Floor Plan

APARTMENT PROJECT



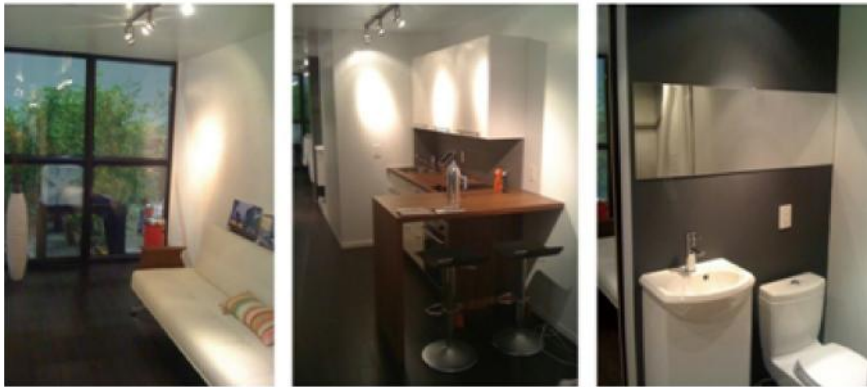
APARTMENT PROJECT



AREA

30m²

COMPOSITION ONE 40 HC



APARTMENT PROJECT



AREA

45m²

COMPOSITION

ONE 40 HC AND ONE 20 HC



APARTMENT PROJECT DISPLAY



AREA : 27m²

COMPOSITION : CONTAINER ASSEMBLY



APARTMENT PROJECT



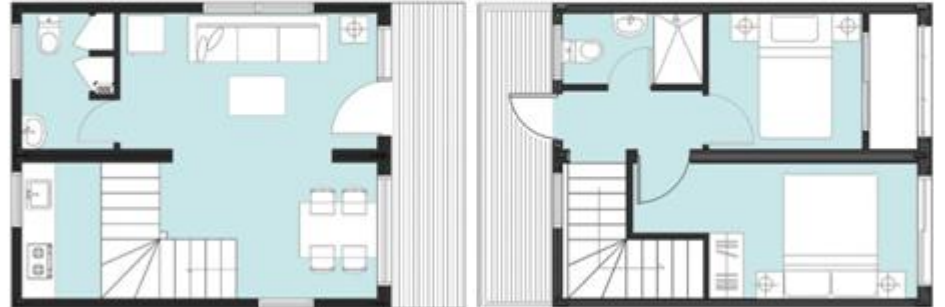
AREA 60m²

COMPOSITION FOUR 20 HC



一层平面图
First Floor Plan

二层平面图
Second Floor Plan



APARTMENT PROJECT



AREA : 88m²

COMPOSITION : CONTAINER ASSEMBLY



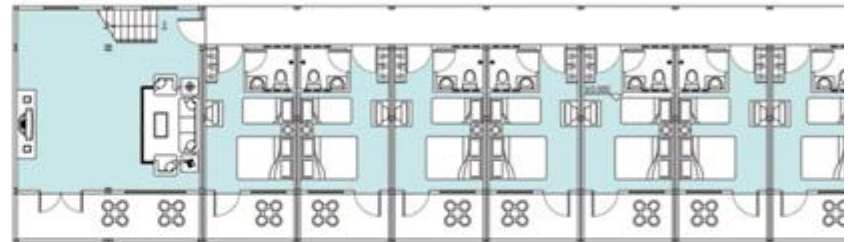
APARTMENT PROJECT



AREA 300m²

COMPOSITION: STEEL FRAME MODULAR HOUSE

First Floor Plan



APARTMENT PROJECT



AREA 27m²

COMPOSITION CONTAINER ASSEMBLY



AREA 27m²

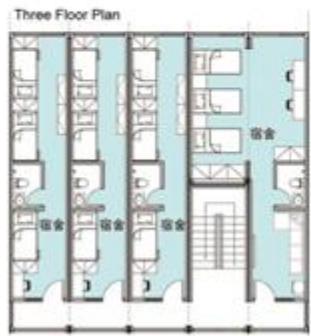
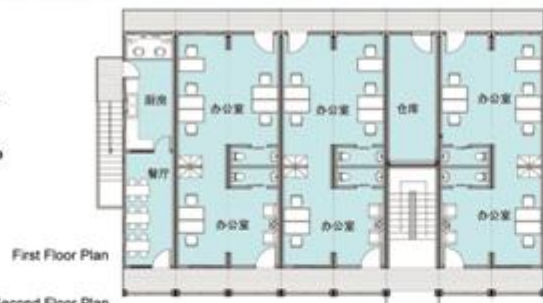
COMPOSITION CONTAINER ASSEMBLY



APARTMENT PROJECT



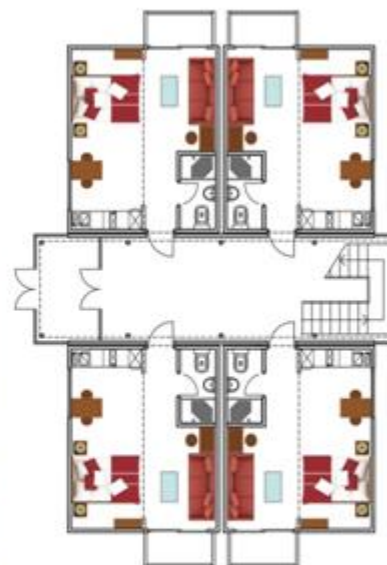
AREA 540m²
COMPOSITION 19*40ft GP



APARTMENT PROJECT



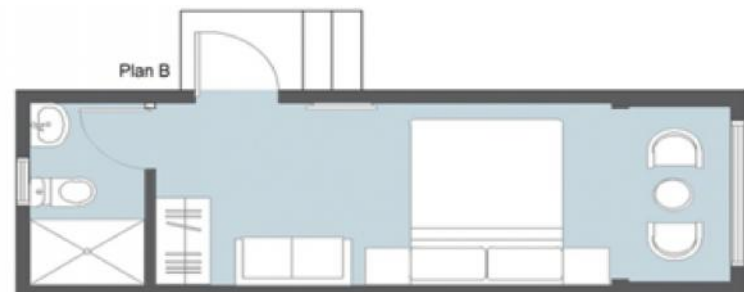
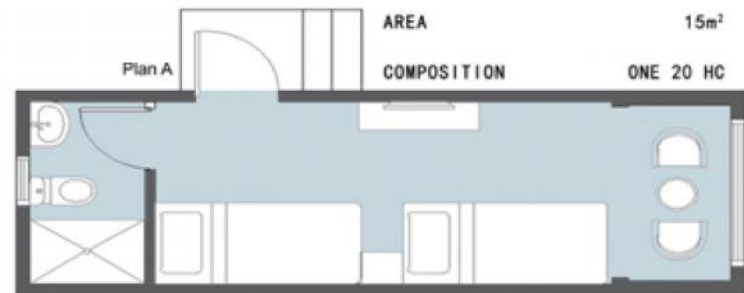
AREA 500m²
COMPOSITION 3*40ft GP 24*20ft GP



APARTMENT PROJECT



APARTMENT PROJECT



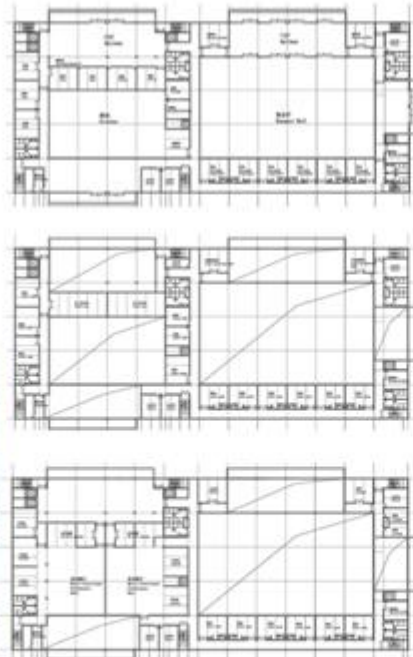
HOTEL PROJECT



HOTEL PROJECT



AREA 9980m²
COMPOSITION 4*40ft GP 420*20ft GP



HOTEL PROJECT



AREA 7970m²
COMPOSITION 334*20FT HC +SS

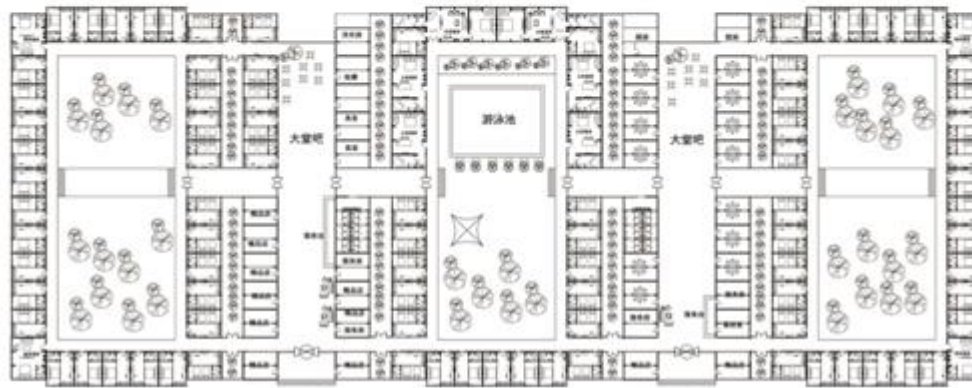


HOTEL PROJECT



AREA 7970m²

COMPOSITION 334*20ft GP



PUBLIC ARCHITECTURE PROJECT



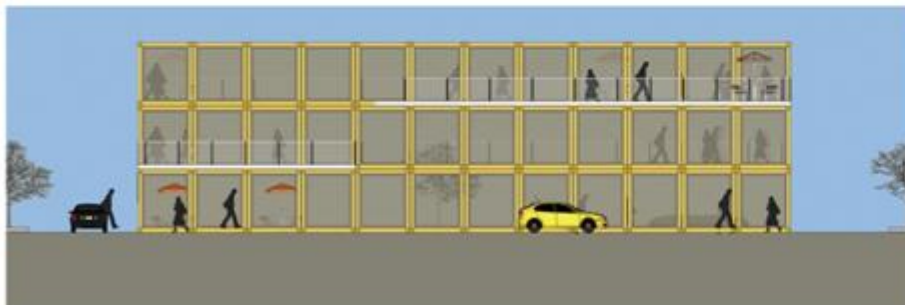
PUBLIC ARCHITECTURE PROJECT



CULTURAL SQUARE

AREA

COMPOSITION CONTAINERS FREE COMBINATION



PUBLIC ARCHITECTURE PROJECT

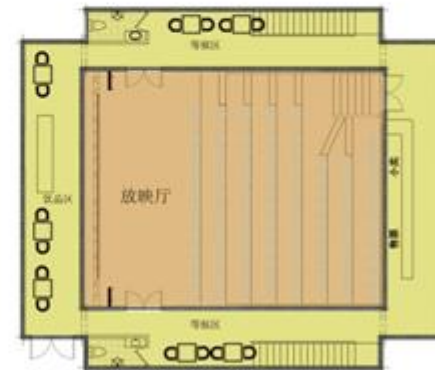


DIGITAL CINEMA

AREA

420m²

COMPOSITION COMBINATION OF CONTAINERS AND STEEL STRUCTURE

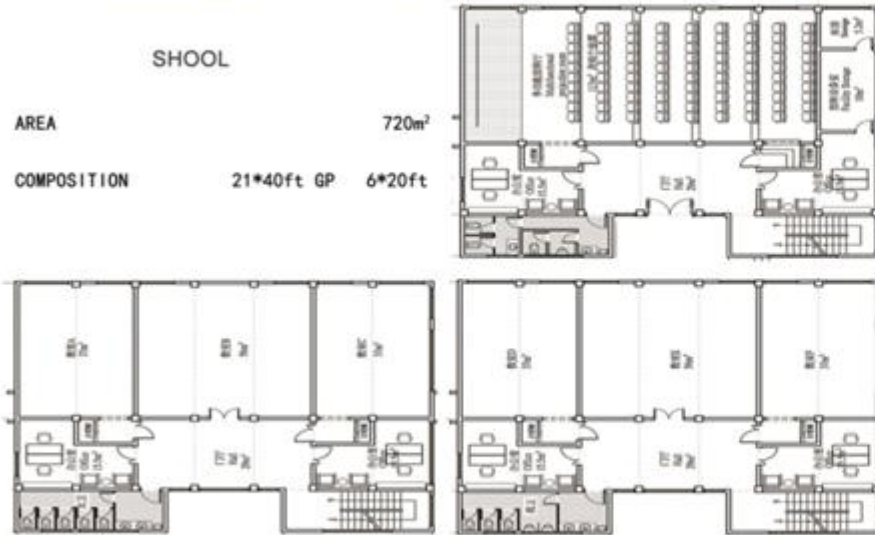




SHOOL

AREA 720m²

COMPOSITION 21*40ft GP 6*20ft



OFFICE

AREA

COMPOSITION CONTAINERS FREE COMB



PUBLIC ARCHITECTURE PROJECT



COMMERCIAL STREET

This house does not destroy the original environment and is high-ceilinged with supports, scattered high and low with two-tier layout design. This design can include a function as a viewing platform. This features is modern minimalist style, can be good integrated with environment. It is removable, low carbon and environmental protection.



PUBLIC ARCHITECTURE PROJECT



CARBARN

AREA 20m²

COMPOSITION: COMPOSITION: STEEL FRAME MODULAR HOUSE

